



VIDEO



ST-003
LED STREET LIGHT

150W

200W

250W

specification

PRODUCT NAME :	LED STREET LIGHT
MODEL NO. :	ST-003 150W / ST-003 200W / ST-003 250W
SPECIFICATION :	AC220-240V, 50-60Hz
WORKING TEMP :	-20-50(°C)
POWER FACTOR :	>0.95
CRI(RA) :	>80
COLOR :	Gray
DRIVER	MOSO / PHILIPS / MEANWELL / SOSEN
LIGHT SOURCE :	Bridgelux 5050
LUMEN :	170-190 LM/W
BEAM ANGLE :	70*140°
PRODUCT SIZE :	721*350*135mm / 804*350*135mm / 887*350*135mm
IP :	IP67
MATERIAL	Aluminum
WORKING TIME	50.000 hrs
FIRE RESISTANT(WIRES):	105°
THICKNESS(HEAT SINK):	2mm
APPLICATION :	Garden, Park, Street, Plazas..etc.
WARRANTY :	5 years
STANDARD :	CE
OTHERS :	Ta: 60° Tc:90°

Color Temperature:

6500K / 4000K / 3000K



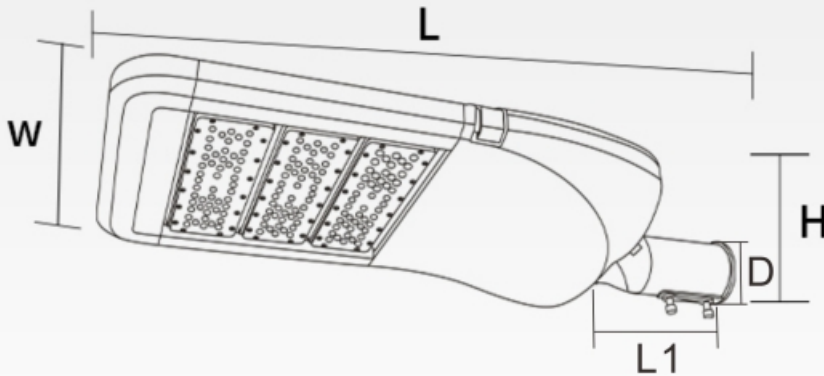
NEXTLITE PRODUCTS



Description:

NEXLEDS LED Street Light with its compact design made of LED modules and modern LED architecture. It is versatile, cost-effective luminaire that fulfils basic functional road lighting requirements. It is made of high-quality components that ensure long lifetime and low maintenance cost. Thus its a road lighting luminaire that provides effective illumination while at the same time cutting energy and maintenance bills.

Dimension:



ST-003	150W
	L: 721mm
	W: 350mm
	H: 135mm
	D: 62mm
	L1: 116mm
Weight: 5.5KGS	

ST-003	200W
	L: 804mm
	W: 350mm
	H: 135mm
	D: 62mm
	L1: 116mm
Weight: 6.4KGS	

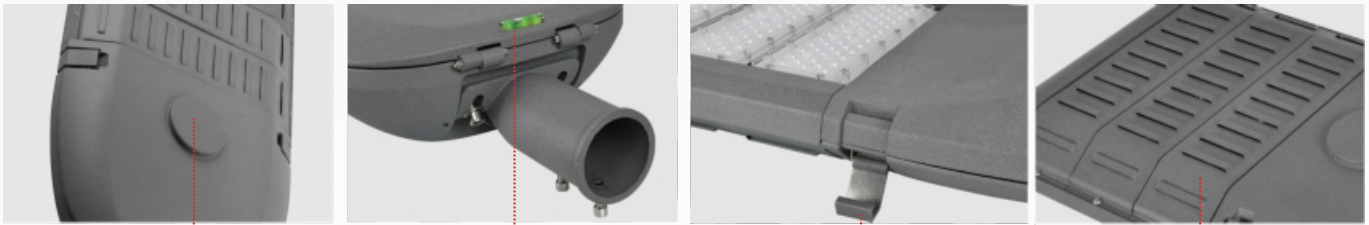
ST-003	250W
	L: 887mm
	W: 350mm
	H: 135mm
	D: 62mm
	L1: 116mm
Weight: 7.2KGS	

Benefit:

- High energy savings.
- Good colour rendering, making it easier for users to orientate themselves.
- Long life - up to 50,000 hours, resulting in less maintenance.
- Uniform, high quality light.
- Excellent energy-efficient performance.
- Replaces all traditional light sources for road traffic routes.
- Highly efficient lighting platform without no compromising to cover all applications.
- Full flexibility to cover all applications.
- Highly aesthetic design and state-of-the-art functionality.
- Reduction in CO² emission.
- Can provide high energy savings without dimming or switching off during the night.
- A light source that can be used anywhere, from footpaths to motorways.

Features:

- High lumen LED modules.
- MOSO / PHILIPS / MEANWELL / SOSEN LED driver (optional).
- Luminaire uses UV protected PC diffuser with transmittance rate of 97%.
- Suitable for horizontal and vertical installation with adaptor adjustable by $\pm 15^\circ$.
- IP67 LED modules with screw free design for avoid water penetration.
- Independent LED modules makes maintenance easier.
- Equipped with 10kv surge protection device (optional).
- Honeycomb briquette effect heat dissipation principle, best thermal management system.
- Optional installation can be installed horizontally or vertically, adjustable by $\pm 15^\circ$ in both directions.
- Multiple lighting distributions available.
- Die cast Aluminum housing.
- Standard color: Grey. Other housing colors are optional.
- Easy tool onsite maintenance and repair
- Working temperature: -20°C to 50°C .
- IP rating: IP67.
- Life-span: 50,000 hours.

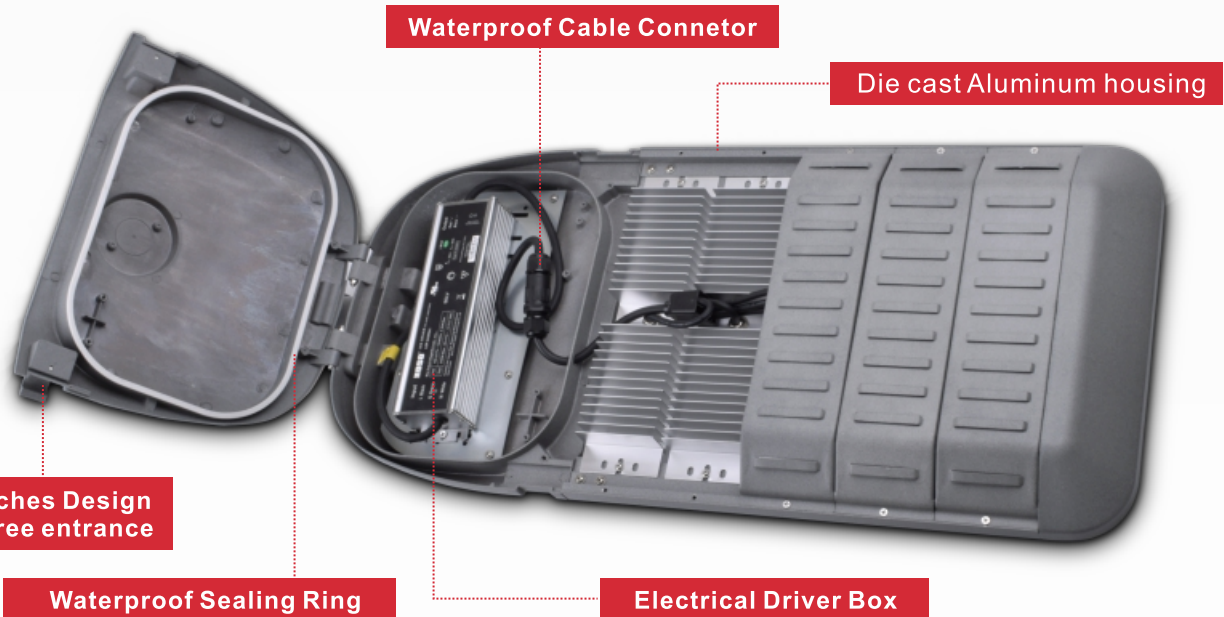


Light Sensor
(Optional)

Gradienter

Latches

Radiator



Waterproof Cable Connector

Die cast Aluminum housing

2xLatches Design
Tool free entrance

Waterproof Sealing Ring

Electrical Driver Box

LED Modules:



Specification:

- Working Environment: -20°C ~ +50°C
- Relative humidity: 10% ~ 90% RH
- Typical Value of Pad Temperature: 70°C
- IP Rating of LED Light Engine: IP67
- Impact Protection Level: IK09
- Color Temperature (CCT): 6500K, 4000K, 3000K
- Main Material: Aluminum

Product Features:

- High lumen LED chips
- Super long lifetime
- Multiple lighting distributions available
- Wide applicability for complex situations
- High versatility apply for all sorts of lamps retrofit.

Description:

LED module is an individual module, available in different wattages. It's made of high lumen LED chip, aluminum 6063 material. We can add more individual modules parallel to each other in order to produce higher wattages as per the requirement.

Application:

